

News Release



Date: 24 July 2006
No. : 162/2006
Time of release: 11.00 hrs

Theme:
Industry and Services

Compiled by:

Tourism Statistics Unit
e-mail: tourism.nso@gov.mt
Tel: 25997329

The monthly calendar of NSO News Releases may be consulted on the Office's website at www.nso.gov.mt

Tourism

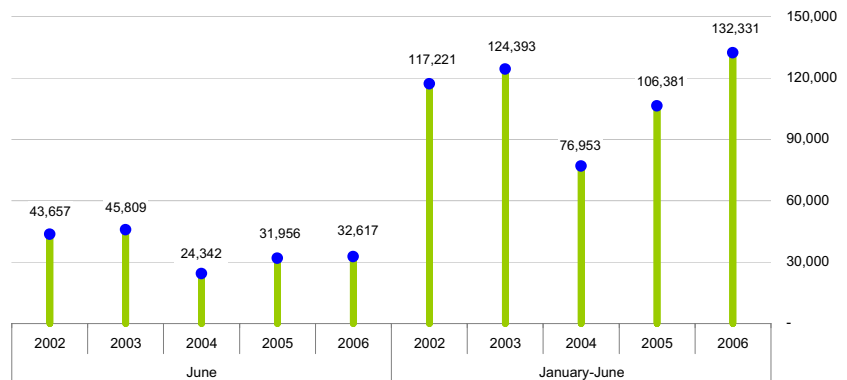
Cruise passengers: June 2006

June 2006

In June 2006, the number of cruise passengers arriving in Malta went up by 661, an increase of 2.1 per cent over the corresponding month a year ago, to a total of 32,617.

Chart 1. Graphical Overview

Cruise passengers, total



When compared to June last year, increases in cruise passengers included those recorded from the American, the French and the Spanish markets, by 1,417, 814 and 496 respectively.

On the other hand, cruise passengers arriving from Italy decreased by 4,175, to a total of 6,282.

January-June 2006

During the first half of the year, the number of cruise passengers who visited Malta went up by 24.4 per cent, to 132,331, an increase of 25,950 same-day visitors over the corresponding period in 2005. The major markets for cruise passengers were the German (31,667), the Italian (24,732), the Spanish (19,621), and the French (13,787). Further illustrations can be looked up on Page 3.

During the period under review, female cruise passengers slightly exceeded male ones, the former accounting for 50.2 per cent of the total – see Chart 2.

The greatest proportion of cruise passengers - 34.7 per cent - were aged 40-59 years, trailed by passengers aged 60-79 and 20-39 years, at 32.5 and 19.3 per cent respectively. For further analysis refer to Page 4 ■

National Statistics Office
Library & Information Unit
Lascaris, Valletta CMR 02, Malta
Tel: (+356) 25997219
Fax: (+356) 25997205
e-mail: nso@gov.mt
<http://www.nso.gov.mt>

Table 1. Cruise passengers arriving in Malta: June 2006

Country	Number of passengers				Sex		
	Landed	Embarked	Transit	Total	Male	Female	Total
Austria	-	-	458	458	183	275	458
Belgium	6	4	72	82	35	47	82
Canada	2	5	325	332	152	180	332
Denmark	1	1	37	39	17	22	39
France	1	1	1,626	1,628	811	817	1,628
Germany	4	5	4,035	4,044	2,048	1,996	4,044
Greece	3	4	5	12	6	6	12
Ireland (Republic of)	3	3	14	20	4	16	20
Italy	19	11	6,252	6,282	3,705	2,577	6,282
Malta	1,127	1,137	1	2,265	984	1,281	2,265
Netherlands	15	15	85	115	58	57	115
Norway	2	2	32	36	20	16	36
Russia	1	1	25	27	12	15	27
Spain	8	4	6,977	6,989	3,126	3,863	6,989
Sweden	15	10	31	56	22	34	56
Switzerland	-	-	284	284	110	174	284
Turkey	-	-	12	12	6	6	12
UK	307	388	1,866	2,561	1,199	1,362	2,561
US	105	104	4,255	4,464	1,967	2,497	4,464
Yugoslavia	2	2	4	8	5	3	8
Other	209	208	2,486	2,903	1,301	1,602	2,903
Total	1,830	1,905	28,882	32,617	15,771	16,846	32,617

Chart 2. January-June 2002-2006
Total cruise passengers, by sex

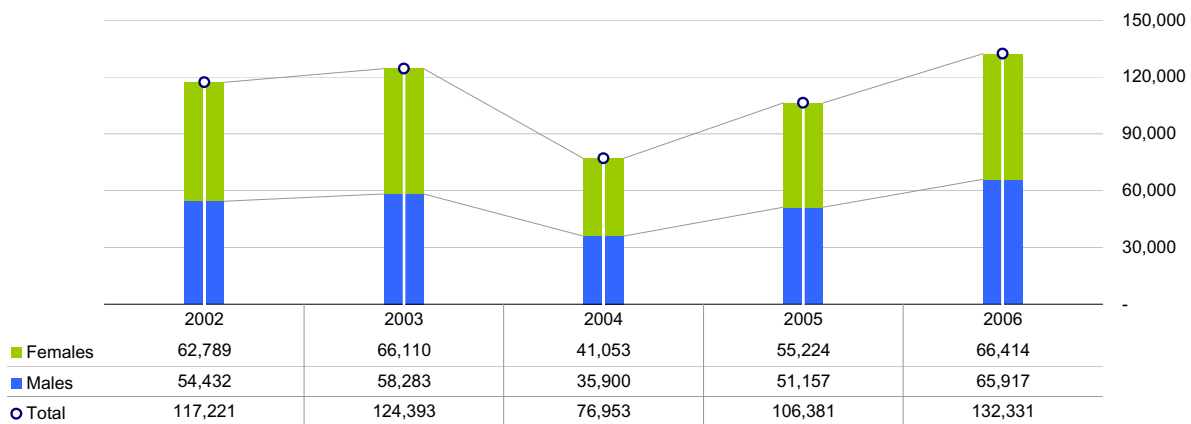


Table 2. Cruise passengers arriving in Malta classified by country of origin

Country	June			January-June		
	2005	2006	Annual change	2005	2006	Annual change
Austria	207	458	251	2,229	3,007	778
Belgium	50	82	32	511	790	279
Canada	598	332	-266	1,874	1,949	75
Denmark	61	39	-22	234	228	-6
France	814	1,628	814	10,571	13,787	3,216
Germany	3,917	4,044	127	21,013	31,667	10,654
Greece	31	12	-19	45	42	-3
Ireland (Republic of)	25	20	-5	105	164	59
Italy	10,457	6,282	-4,175	27,057	24,732	-2,325
Malta	1,141	2,265	1,124	1,534	2,575	1,041
Netherlands	476	115	-361	894	538	-356
Norway	19	36	17	93	553	460
Russia	113	27	-86	172	159	-13
Spain	6,493	6,989	496	13,508	19,621	6,113
Sweden	28	56	28	66	221	155
Switzerland	196	284	88	2,236	1,736	-500
Turkey	113	12	-101	139	69	-70
UK	2,360	2,561	201	6,398	10,660	4,262
US	3,047	4,464	1,417	10,965	13,115	2,150
Yugoslavia	3	8	5	7	26	19
Others	1,807	2,903	1,096	6,730	6,692	-38
Total	31,956	32,617	661	106,381	132,331	25,950

Chart 3. January-June 2006

Cruise passengers - by country of origin

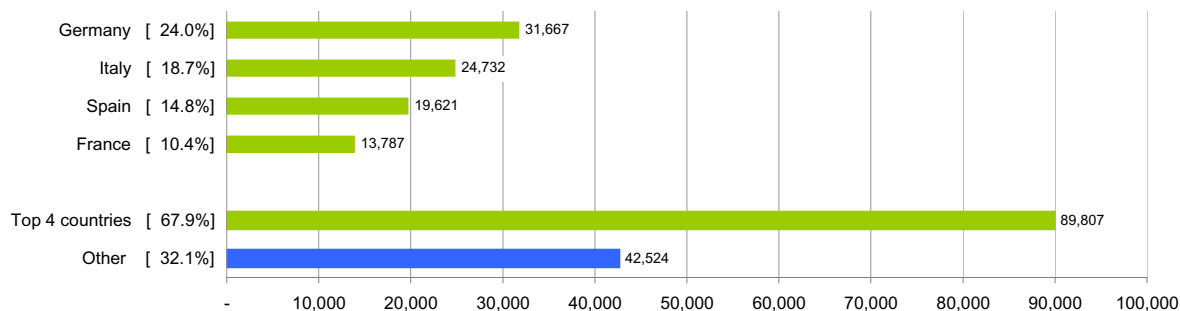


Chart 4. January-June 2005

Cruise passengers - by country of origin

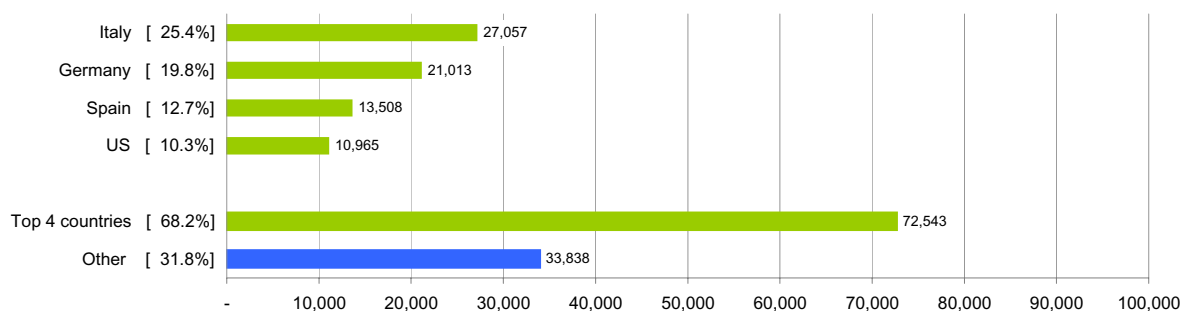


Table 3. Monthly cruise passengers arriving in Malta classified by age group: 2006

Month	Age group												Total
	0-4	5-9	10-19	20-29	30-39	40-49	50-59	60-69	70-79	80-89	90-99	100+	
January	81	159	312	151	469	683	894	1,341	1,191	255	15	-	5,551
February	50	106	199	316	594	852	1,327	1,680	658	85	21	-	5,888
March	66	58	420	632	993	1,293	1,788	1,874	790	109	37	-	8,060
April	491	1,422	3,967	2,488	3,968	6,046	6,388	7,432	3,934	847	199	-	37,182
May	550	695	1,627	3,267	4,445	6,479	8,496	10,218	6,086	1,006	164	-	43,033
June	485	1,236	2,626	3,985	4,272	5,442	6,150	5,253	2,565	464	139	-	32,617
Total	1,723	3,676	9,151	10,839	14,741	20,795	25,043	27,798	15,224	2,766	575	-	132,331

Chart 5. January-June 2006
Cruise passengers - by age group

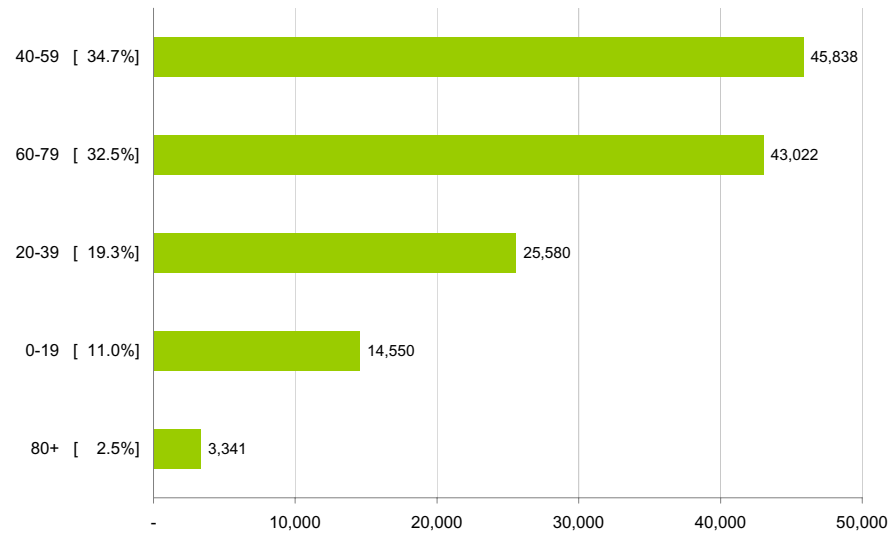


Chart 6. January-June 2005
Cruise passengers - by age group

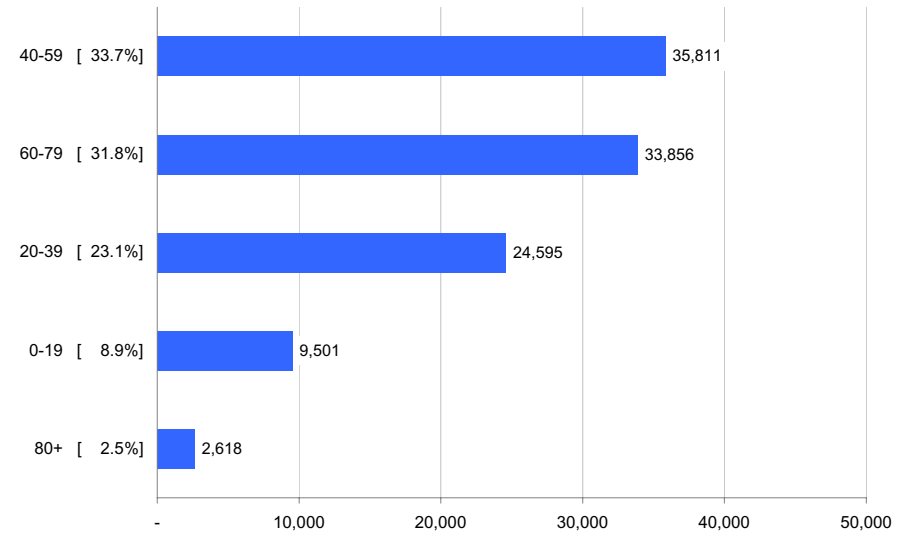


Chart 7. Monthly cruise liner calls: 2002-2006

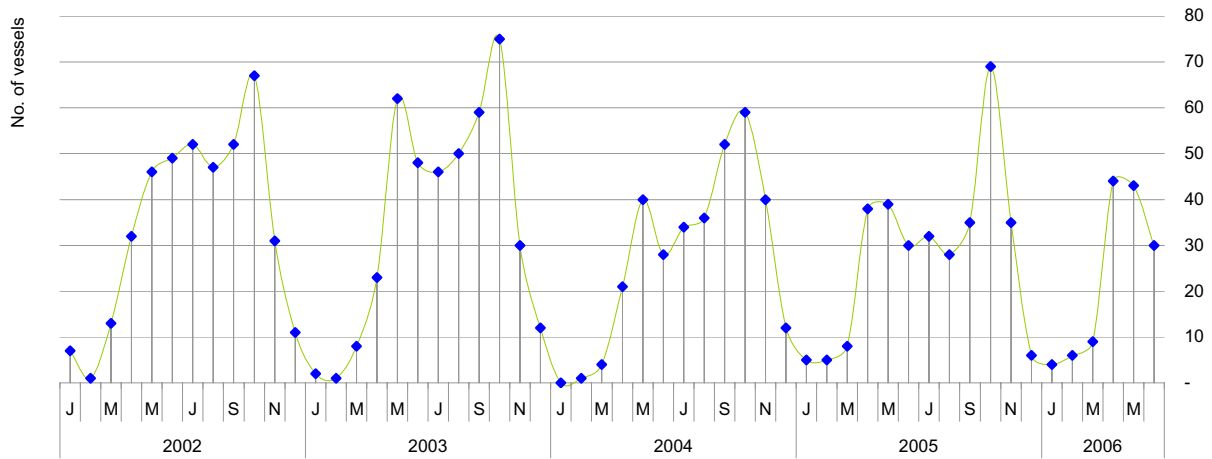
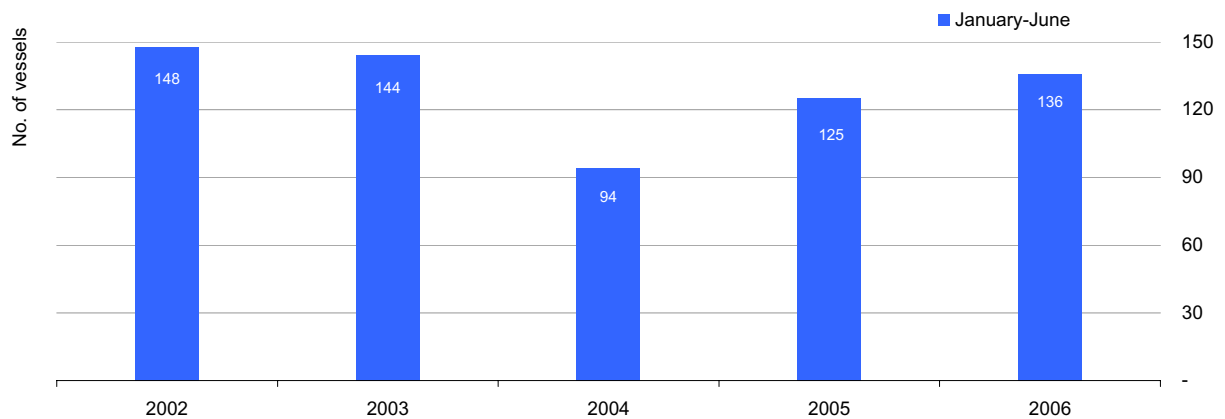


Table 4. Monthly cruise liner calls: 2002-2006

Month	2002	2003	2004	2005	2006
January	7	2	-	5	4
February	1	1	1	5	6
March	13	8	4	8	9
April	32	23	21	38	44
May	46	62	40	39	43
June	49	48	28	30	30
July	52	46	34	32	
August	47	50	36	28	
September	52	59	52	35	
October	67	75	59	69	
November	31	30	40	35	
December	11	12	12	6	

Chart 8. Cruise liner calls: 2002-2006



Methodological Notes

1. The data in this release are compiled on the basis of administrative records held by the Malta Maritime Authority.
2. Data should be considered as final and are not normally subject to further revisions.

Definitions:

- Landed passengers cover all cruise passengers who arrive in Malta on a cruise ship and leave Malta by other means of transport or stay in Malta.

- Embarked passengers cover all cruise passengers who are either Maltese and leave Malta on a cruise ship, or alternatively, are foreigners who come to Malta by other means of transport and leave Malta on a cruise ship.

- Transit passengers cover all cruise passengers who arrive in Malta on a cruise ship and leave Malta by the same cruise ship.